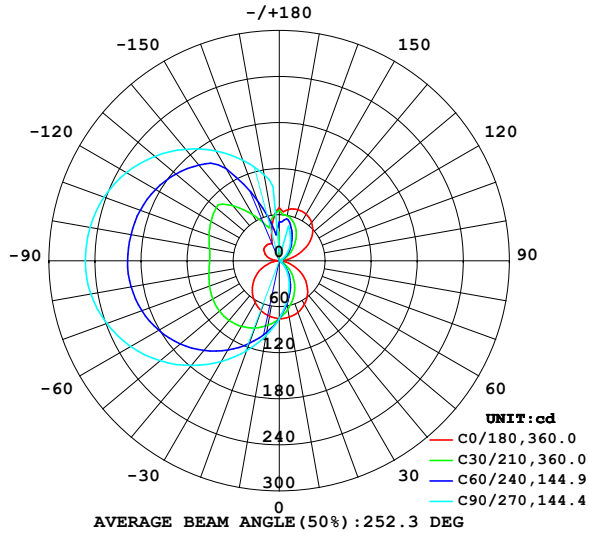


LUMINAIRE PHOTOMETRIC TEST REPORT

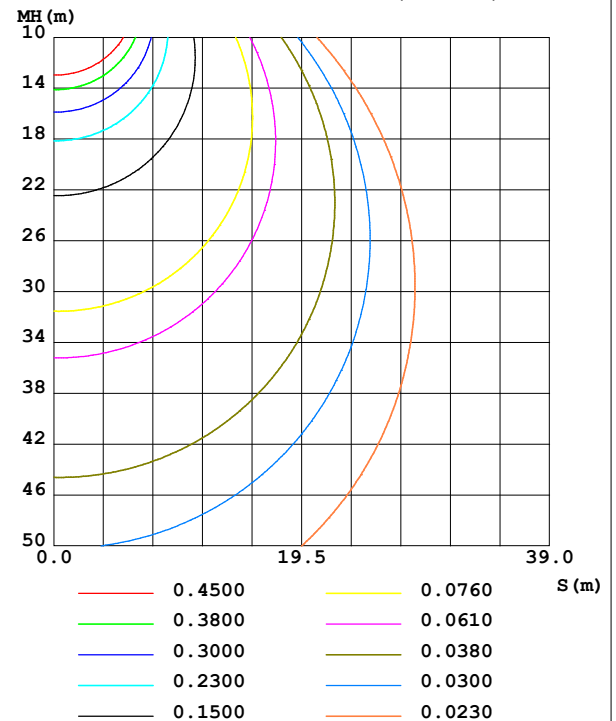
NAME: 99WTE12/BL	TYPE:	WEIGHT: 1
SPEC.:	DIM.: 600 x 200 x 25	SERIAL No.: 0
MFR.: Elmark Industries JSC	SUR.: Cilinder	Shielding Angle:

DATA OF LAMP		PHOTOMETRIC DATA			
MODEL	99WTE12/BL	Imax(cd)	252.7	S/MH(C0/180)	1.24
NOMINAL POWER(W)	12	LOR(%)	121.1	S/MH(C90/270)	2.94
RATED VOLTAGE(V)	230	TOTAL FLUX(lm)	944.56	η UP,DN(C0-180)	6.1,6.3
NOMINAL FLUX(lm)	780	CIE CLASS	DIFFUSE	η UP,DN(C180-360)	54.8,53.9
LAMPS INSIDE	1	η up (%)	60.9	CIBSE SHR NOM	1.50
TEST VOLTAGE(V)	230	η down (%)	60.2	CIBSE SHR MAX	1.55

LUMINOUS INTENSITY DISTRIBUTION DIAGRAM



C0 PLANE ISOLUX DIAGRAM (UNIT:lx)



C Range: 0 - 360DEG
C Interval: 10.0DEG
Test Speed: HIGH
Temperature:25.3°C
Operators:
Test Date:13 December 2022

γ Range: 0 - 180DEG
 γ Interval: 2.5DEG
Test System:EVERFINE GO-2000A_V1 SYSTEM V2.00.456
Humidity:65.0%
Test Distance:6.265m [K=1.0000]
Remarks:

ZONAL FLUX DIAGRAM

ZONAL FLUX DIAGRAM:

γ	C0	C45	C90	C135	C180	C225	C270	C315	γ	Φ zone	Φ total	%lum, lamp
10	74.77	60.60	55.44	60.13	73.60	90.45	98.92	91.54	0- 10	7.210	7.210	0.76,0.92
20	71.57	46.33	38.47	45.85	69.45	104.9	124.7	107.6	10- 20	21.51	28.72	3.04,3.68
30	65.78	33.00	24.58	32.86	63.10	117.8	151.7	122.6	20- 30	35.30	64.02	6.78,8.21
40	57.42	20.91	13.41	21.31	54.69	128.5	178.3	135.8	30- 40	47.98	112.0	11.9,14.4
50	46.65	10.70	5.848	11.49	44.47	136.7	202.8	146.5	40- 50	58.86	170.9	18.1,21.9
60	33.75	3.745	2.349	4.708	32.76	142.3	223.5	154.3	50- 60	67.47	238.3	25.2,30.6
70	19.58	1.626	2.370	1.958	20.09	145.7	239.3	159.6	60- 70	73.87	312.2	33.1,40
80	6.332	1.574	2.362	1.919	7.936	147.0	249.4	162.7	70- 80	77.94	390.1	41.3,50
90	0.7225	1.523	2.313	1.871	0.6574	147.0	252.7	163.7	80- 90	79.63	469.8	49.7,60.2
100	10.91	1.513	2.231	1.829	6.455	146.7	250.3	164.4	90-100	79.79	549.6	58.2,70.5
110	27.33	3.232	2.174	2.597	16.91	147.0	243.1	164.6	100-110	79.28	628.8	66.6,80.6
120	44.05	9.279	5.197	7.429	22.57	145.9	230.0	162.3	110-120	76.86	705.7	74.7,90.5
130	57.00	17.83	11.52	14.79	25.84	142.8	211.8	157.2	120-130	71.64	777.4	82.3,99.7
140	65.65	26.76	20.17	18.42	26.42	131.9	189.8	149.0	130-140	62.34	839.7	88.9,108
150	70.30	37.93	29.46	16.41	25.76	96.25	165.2	138.0	140-150	48.49	888.2	94,114
160	70.98	49.00	41.15	13.28	28.56	62.16	139.5	124.4	150-160	32.68	920.9	97.5,118
170	67.90	57.40	11.14	32.74	51.19	47.89	113.6	108.0	160-170	18.06	938.9	99.4,120
180	69.28	60.58	14.27	71.34	69.44	60.58	14.26	71.33	170-180	5.650	944.6	100,121
DEG	LUMINOUS INTENSITY:cd									UNIT:lm		

Conical surface Flux(90deg): 140.2 lm

%lum = 14.8%

%lamp = 18.0%

Conical surface Flux(130deg): 274.6 lm

%lum = 29.1%

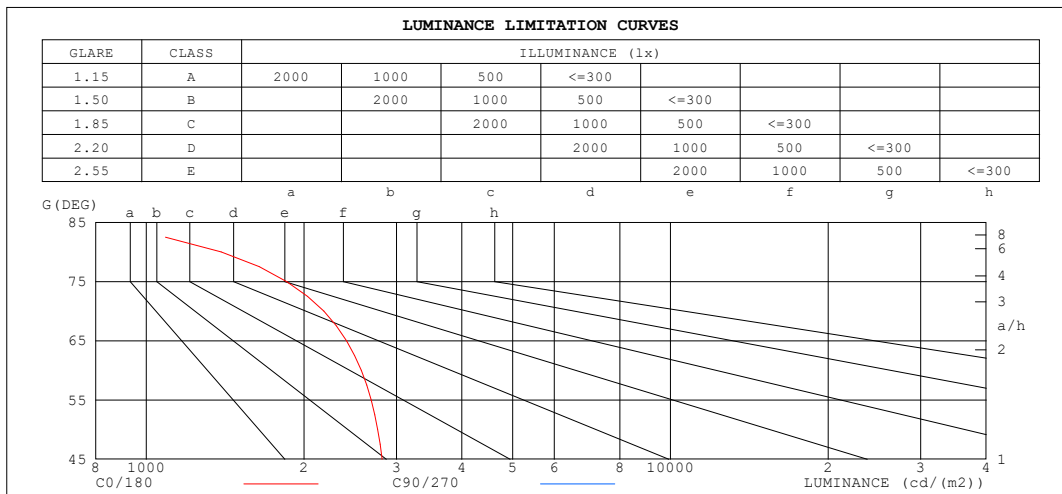
%lamp = 35.2%

C Range: 0 - 360DEG
C Interval: 10.0DEG
Test Speed: HIGH
Temperature:25.3°C
Operators:
Test Date:13 December 2022

γ Range: 0 - 180DEG
 γ Interval: 2.5DEG
Test System:EVERFINE GO-2000A_V1 SYSTEM V2.00.456
Humidity:65.0%
Test Distance:6.265m [K=1.0000]
Remarks:

LUMINANCE LIMITATION CURVES

NAME: 99WTE12/BL	TYPE:	WEIGHT: 1
SPEC.:	DIM.: 600 x 200 x 25	SERIAL No.: 0
MFR.: Elmark Industries JSC	SUR.: Cilinder	Shielding Angle:



LUMINANCE cd/(m2)		
G (DEG)	C0/180	C90/270
85	791	1019
80	1388	516
75	1852	347
70	2180	263
65	2409	213
60	2570	178
55	2684	221
50	2763	345
45	2818	495

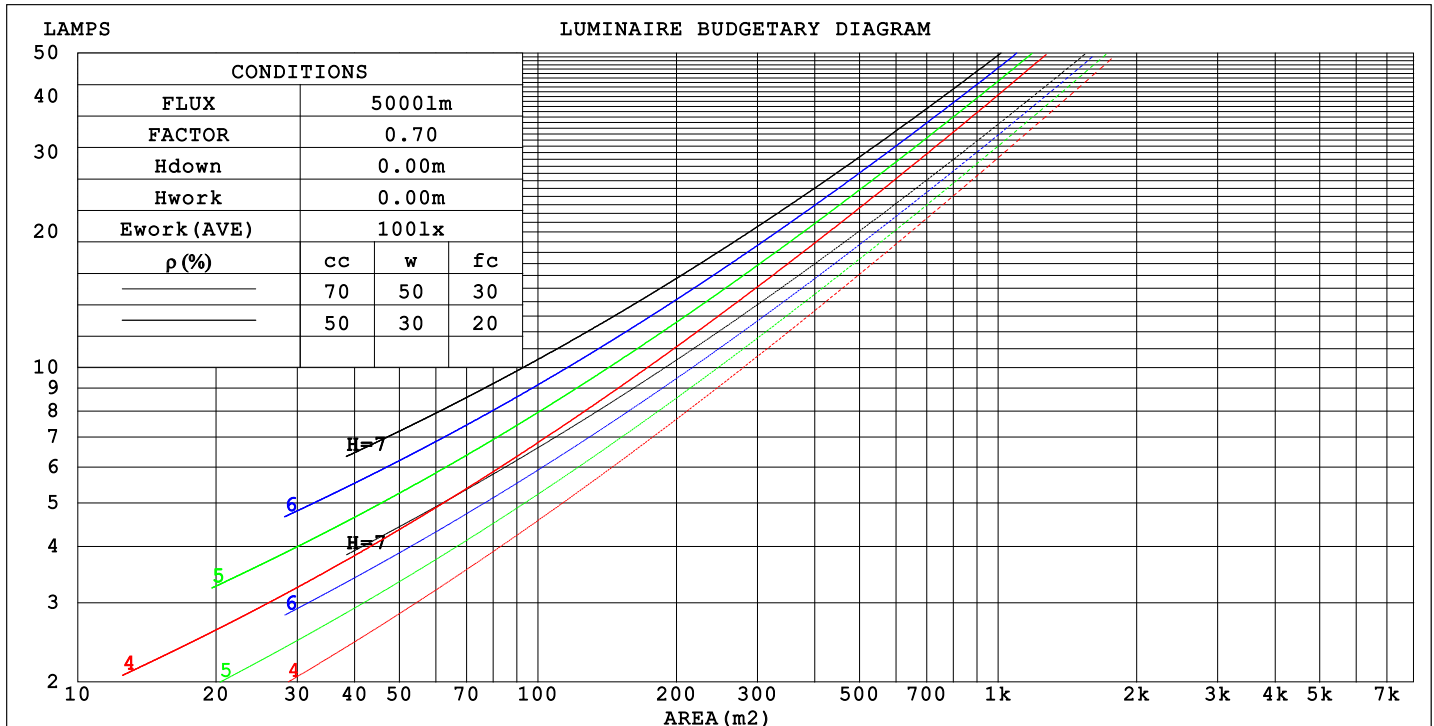
C Range: 0 - 360DEG
C Interval: 10.0DEG
Test Speed: HIGH
Temperature: 25.3°C
Operators:
Test Date: 13 December 2022

γ Range: 0 - 180DEG
γ Interval: 2.5DEG
Test System: EVERFINE GO-2000A_V1 SYSTEM V2.00.456
Humidity: 65.0%
Test Distance: 6.265m [K=1.0000]
Remarks:

CU AND LUMINAIRE BUDGETARY ESTIMATE DIAGRAM

NAME: 99WTE12/BL	TYPE:	WEIGHT: 1
SPEC.:	DIM.: 600 x 200 x 25	SERIAL No.: 0
MFR.: Elmark Industries JSC	SUR.: Cilinder	Shielding Angle:

pcc	80%			70%			50%			30%			10%			0
pw	50%	30%	10%	50%	30%	10%	50%	30%	10%	50%	30%	10%	50%	30%	10%	0
pfc	20%			20%			20%			20%			20%			0
RCR	RCR:Room Cavity Ratio															



C Range: 0 - 360DEG
 C Interval: 10.0DEG
 Test Speed: HIGH
 Temperature: 25.3°C
 Operators:
 Test Date: 13 December 2022

γ Range: 0 - 180DEG
 γ Interval: 2.5DEG
 Test System: EVERFINE GO-2000A_V1 SYSTEM V2.00.456
 Humidity: 65.0%
 Test Distance: 6.265m [K=1.0000]
 Remarks:

WEC AND CCEC

NAME: 99WTE12/BL	TYPE:	WEIGHT: 1
SPEC.:	DIM.: 600 x 200 x 25	SERIAL No.: 0
MFR.: Elmark Industries JSC	SUR.: Cilinder	Shielding Angle:

pcc	80%			70%			50%			30%			10%			0
pw	50%	30%	10%	50%	30%	10%	50%	30%	10%	50%	30%	10%	50%	30%	10%	0
pfc	20%			20%			20%			20%			20%			0
RCR	RCR:Room Cavity Ratio						Wall Exitance Coefficients(WEC)									
0.0																
1.0	.474	.270	.085	.447	.255	.081	.396	.227	.072	.349	.201	.065	.306	.177	.057	
2.0	.400	.219	.067	.375	.206	.064	.328	.182	.057	.285	.160	.050	.246	.139	.044	
3.0	.351	.187	.056	.328	.176	.053	.285	.155	.047	.246	.135	.041	.209	.116	.036	
4.0	.313	.163	.048	.293	.153	.045	.254	.135	.040	.217	.117	.035	.184	.100	.030	
5.0	.284	.145	.042	.265	.136	.040	.229	.119	.035	.195	.103	.031	.164	.088	.026	
6.0	.259	.130	.037	.242	.122	.035	.209	.107	.031	.178	.092	.027	.149	.078	.023	
7.0	.239	.118	.033	.222	.111	.032	.192	.097	.028	.163	.084	.024	.136	.071	.021	
8.0	.221	.108	.030	.206	.101	.029	.177	.089	.025	.151	.076	.022	.125	.064	.019	
9.0	.206	.099	.028	.192	.093	.026	.165	.082	.023	.140	.070	.020	.116	.059	.017	
10.0	.192	.092	.026	.179	.087	.024	.154	.076	.021	.131	.065	.018	.109	.055	.016	

pcc	80%			70%			50%			30%			10%			0
pw	50%	30%	10%	50%	30%	10%	50%	30%	10%	50%	30%	10%	50%	30%	10%	0
pfc	20%			20%			20%			20%			20%			0
RCR	RCR:Room Cavity Ratio						Ceiling Cavity Exitance Coefficients (CCEC)									
0.0	.694	.694	.694	.594	.594	.594	.405	.405	.405	.233	.233	.233	.074	.074	.074	
1.0	.693	.656	.623	.593	.563	.536	.405	.387	.371	.233	.224	.215	.075	.072	.070	
2.0	.685	.630	.584	.587	.543	.505	.402	.375	.352	.232	.218	.206	.074	.071	.067	
3.0	.677	.612	.560	.580	.528	.485	.398	.367	.341	.230	.214	.201	.074	.070	.066	
4.0	.668	.598	.544	.573	.517	.473	.394	.360	.333	.228	.211	.197	.073	.069	.065	
5.0	.659	.587	.533	.566	.508	.464	.390	.355	.328	.226	.208	.194	.073	.068	.064	
6.0	.651	.578	.526	.559	.501	.458	.386	.350	.324	.224	.206	.193	.072	.067	.064	
7.0	.643	.571	.520	.553	.495	.453	.382	.347	.321	.222	.204	.191	.072	.067	.063	
8.0	.635	.564	.516	.547	.490	.450	.378	.344	.319	.220	.203	.190	.071	.066	.063	
9.0	.628	.559	.513	.541	.485	.447	.375	.341	.317	.218	.201	.189	.071	.066	.063	
10.0	.621	.554	.510	.536	.481	.445	.372	.339	.316	.217	.200	.189	.070	.066	.063	

C Range: 0 - 360DEG
C Interval: 10.0DEG
Test Speed: HIGH
Temperature:25.3°C
Operators:
Test Date:13 December 2022

γ Range: 0 - 180DEG
γ Interval: 2.5DEG
Test System:EVERFINE GO-2000A_V1 SYSTEM V2.00.456
Humidity:65.0%
Test Distance:6.265m [K=1.0000]
Remarks:

UGR(Unified Glare Rating) Table

NAME: 99WTE12/BL					TYPE:					WEIGHT: 1				
SPEC.:					DIM.: 600 x 200 x 25					SERIAL No.: 0				
MFR.: Elmark Industries JSC					SUR.: Cilinder					Shielding Angle:				
ceiling/cavity	0.7	0.7	0.5	0.5	0.3	0.7	0.7	0.5	0.5	0.3				
walls	0.5	0.3	0.5	0.3	0.3	0.5	0.3	0.5	0.3	0.3				
working plane	0.2	0.2	0.2	0.2	0.2	0.2	0.2	0.2	0.2	0.2				
Room dimensions					Viewed crosswise					Viewed endwise				
x = 2H y = 2H	7.2	8.3	8.1	9.2	10.3	-2.4	-1.3	-1.5	-0.4	0.7				
3H	8.5	9.4	9.4	10.3	11.5	-1.8	-0.8	-0.9	0.1	1.3				
4H	8.9	9.8	9.8	10.7	11.9	-1.1	-0.1	-0.2	0.8	2.0				
6H	9.1	9.9	10.0	10.8	12.1	0.1	1.0	1.0	1.9	3.1				
8H	9.1	9.9	10.0	10.8	12.1	0.9	1.7	1.8	2.7	3.9				
12H	9.0	9.8	10.0	10.8	12.0	1.9	2.7	2.9	3.7	4.9				
4H 2H	6.7	7.6	7.6	8.6	9.8	-2.1	-1.2	-1.2	-0.3	0.9				
3H	8.0	8.7	8.9	9.7	10.9	-1.4	-0.6	-0.4	0.4	1.6				
4H	8.3	9.1	9.3	10.0	11.3	-0.5	0.2	0.5	1.2	2.5				
6H	8.5	9.2	9.5	10.2	11.5	1.0	1.6	1.9	2.6	3.9				
8H	8.6	9.2	9.6	10.2	11.5	1.9	2.5	2.9	3.5	4.8				
12H	8.6	9.1	9.6	10.1	11.4	3.1	3.7	4.1	4.7	6.0				
8H 4H	8.1	8.7	9.1	9.7	11.0	-0.4	0.2	0.6	1.2	2.5				
6H	8.3	8.8	9.3	9.8	11.2	1.4	1.9	2.4	2.9	4.2				
8H	8.4	8.8	9.4	9.8	11.2	2.6	3.0	3.6	4.0	5.4				
12H	8.4	8.8	9.4	9.8	11.2	4.1	4.5	5.1	5.5	6.9				
12H 4H	8.0	8.6	9.0	9.6	10.9	-0.4	0.1	0.6	1.1	2.5				
6H	8.2	8.7	9.3	9.7	11.1	1.4	1.9	2.4	2.9	4.2				
8H	8.3	8.7	9.3	9.7	11.1	2.8	3.1	3.8	4.2	5.5				
Variations with the observer position at spacings(CIE Pub.117):														
S = 1.0H	+ 1.6 / - 1.6					+ 0.5 / - 0.6								
1.5H	+ 2.9 / - 4.1					+ 0.3 / - 0.4								
2.0H	+ 4.0 / - 6.8					+ 0.5 / - 0.3								

CIE Pub.117, 780.0 lm Total Lamp Luminous Flux Correct (8log(F/F0) = -0.9)
Area: 0.026325 m2

C Range: 0 - 360DEG
C Interval: 10.0DEG
Test Speed: HIGH
Temperature:25.3°C
Operators:
Test Date:13 December 2022

γ Range: 0 - 180DEG
γ Interval: 2.5DEG
Test System:EVERFINE GO-2000A_V1 SYSTEM V2.00.456
Humidity:65.0%
Test Distance:6.265m [K=1.0000]
Remarks:

UTILIZATION FACTORS TABLE

NAME: 99WTE12/BL	TYPE:	WEIGHT: 1
SPEC.:	DIM.: 600 x 200 x 25	SERIAL No.: 0
MFR.: Elmark Industries JSC	SUR.: Cilinder	Shielding Angle:

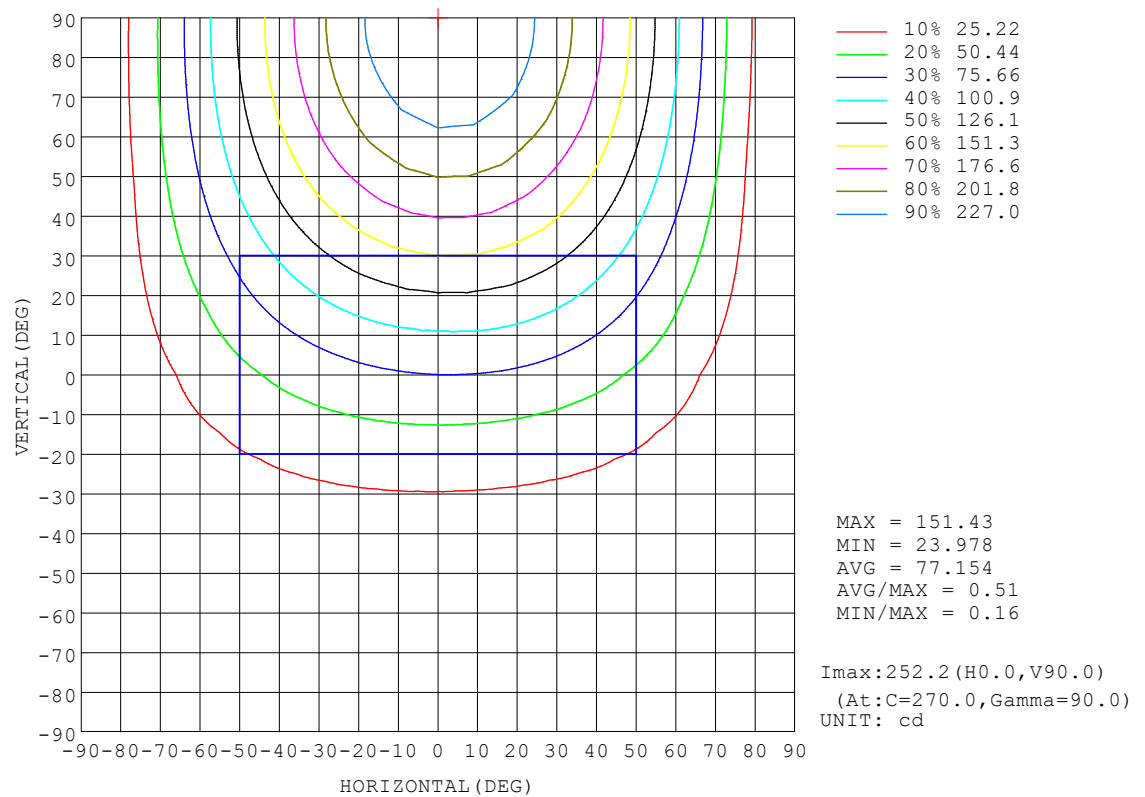
REFLECTANCE										
Ceiling	0.8	0.8	0.8	0.7	0.7	0.7	0.5	0.5	0.5	0
Walls	0.7	0.5	0.3	0.7	0.5	0.3	0.7	0.5	0.3	0
Working plane	0.2	0.2	0.2	0.2	0.2	0.2	0.2	0.2	0.2	0
ROOM INDEX	UTILIZATION FACTORS (PERCENT) $k(RI) \times RCR = 5$									
$k = 0.60$	45	30	22	43	29	21	38	26	19	10
0.80	56	39	29	52	37	28	46	33	26	14
1.00	64	48	37	60	45	35	52	42	32	18
1.25	73	56	45	67	53	42	58	46	38	21
1.50	79	63	51	73	59	49	63	51	43	24
2.00	88	73	62	81	68	58	69	59	51	29
2.50	94	80	69	87	75	65	74	64	56	32
3.00	99	86	76	91	80	71	77	68	61	35
4.00	105	94	85	97	87	79	82	74	68	39
5.00	109	100	91	100	92	85	85	78	73	42
ROOM INDEX	UF(total)									Direct
According to DIN EN 13032-2 2004			Suspended					SHRNOM = 1.25		

C Range: 0 - 360DEG
C Interval: 10.0DEG
Test Speed: HIGH
Temperature:25.3°C
Operators:
Test Date:13 December 2022

γ Range: 0 - 180DEG
γ Interval: 2.5DEG
Test System:EVERFINE GO-2000A_V1 SYSTEM V2.00.456
Humidity:65.0%
Test Distance:6.265m [K=1.0000]
Remarks:

ISOCANDELA DIAGRAM

NAME: 99WTE12/BL	TYPE:	WEIGHT: 1
SPEC.:	DIM.: 600 x 200 x 25	SERIAL No.: 0
MFR.: Elmark Industries JSC	SUR.: Cilinder	Shielding Angle:

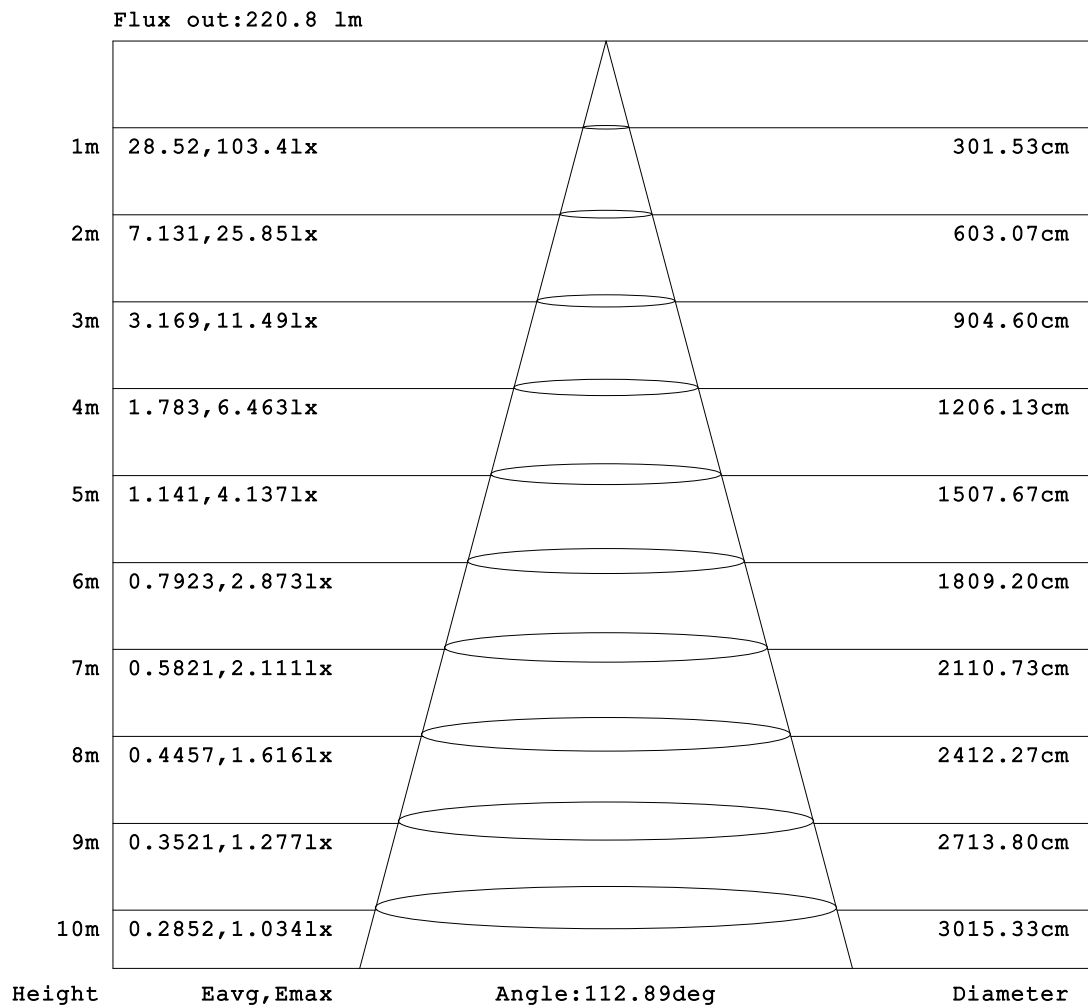


C Range: 0 - 360DEG
 C Interval: 10.0DEG
 Test Speed: HIGH
 Temperature: 25.3°C
 Operators:
 Test Date: 13 December 2022

γ Range: 0 - 180DEG
 γ Interval: 2.5DEG
 Test System: EVERFINE GO-2000A_V1 SYSTEM V2.00.456
 Humidity: 65.0%
 Test Distance: 6.265m [K=1.0000]
 Remarks:

AAI Figure

NAME: 99WTE12/BL	TYPE:	WEIGHT: 1
SPEC.:	DIM.: 600 x 200 x 25	SERIAL No.: 0
MFR.: Elmark Industries JSC	SUR.: Cilinder	Shielding Angle:



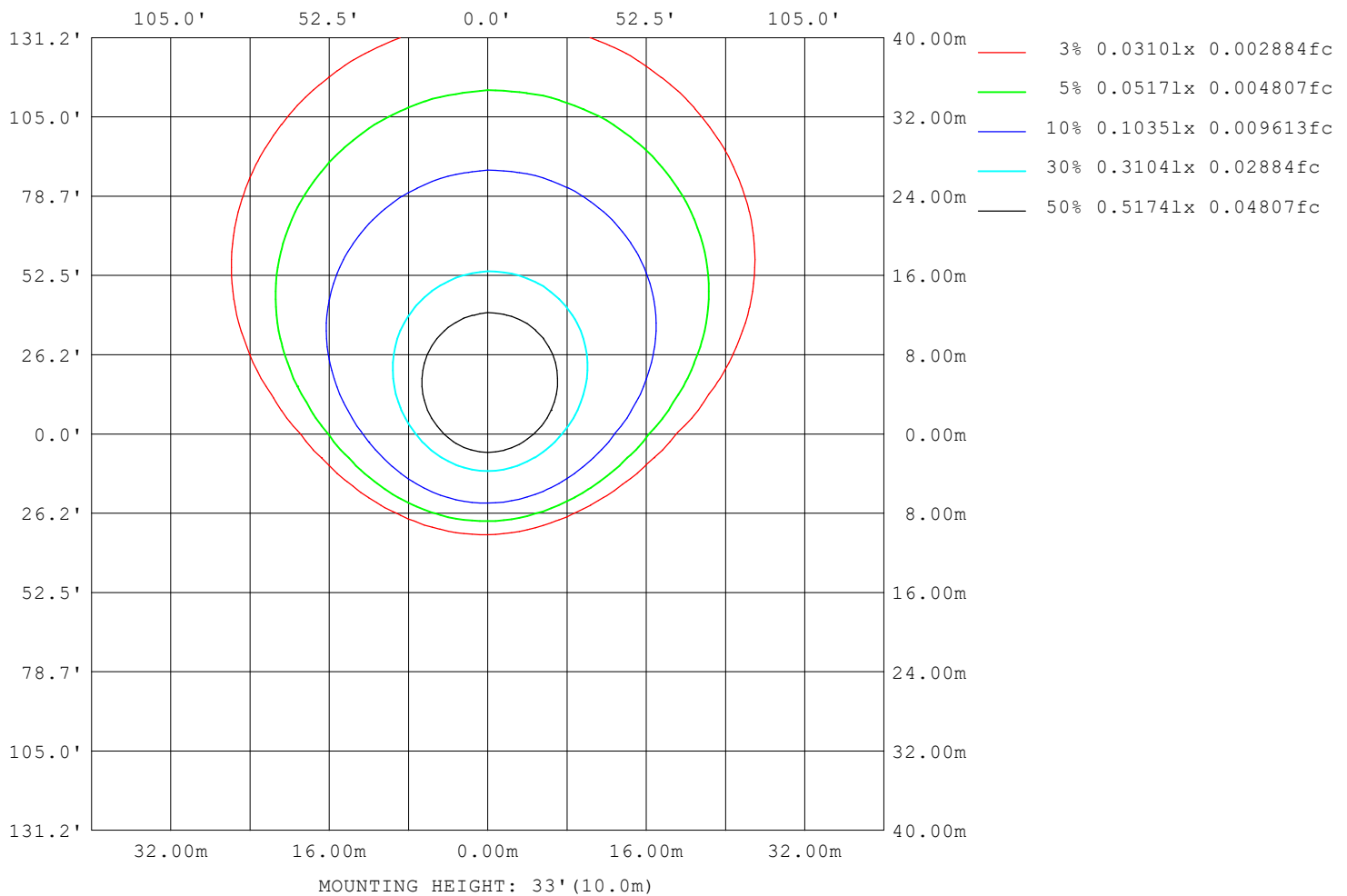
Note: The Curves indicate the illuminated area and the average illumination when the luminaire is at different distance.

C Range: 0 - 360DEG
 C Interval: 10.0DEG
 Test Speed: HIGH
 Temperature: 25.3°C
 Operators:
 Test Date: 13 December 2022

γ Range: 0 - 180DEG
 γ Interval: 2.5DEG
 Test System: EVERFINE GO-2000A_V1 SYSTEM V2.00.456
 Humidity: 65.0%
 Test Distance: 6.265m [K=1.0000]
 Remarks:

ISOLUX DIAGRAM

NAME: 99WTE12/BL	TYPE:	WEIGHT: 1
SPEC.:	DIM.: 600 x 200 x 25	SERIAL No.: 0
MFR.: Elmark Industries JSC	SUR.: Cilinder	Shielding Angle:



C Range: 0 - 360DEG
C Interval: 10.0DEG
Test Speed: HIGH
Temperature: 25.3°C
Operators:
Test Date: 13 December 2022

γ Range: 0 - 180DEG
γ Interval: 2.5DEG
Test System: EVERFINE GO-2000A_V1 SYSTEM V2.00.456
Humidity: 65.0%
Test Distance: 6.265m [K=1.0000]
Remarks:

LED Avg.L Report

NAME: 99WTE12/BL	TYPE:	WEIGHT: 1
SPEC.:	DIM.: 600 x 200 x 25	SERIAL No.: 0
MFR.: Elmark Industries JSC	SUR.: Cilinder	Shielding Angle:

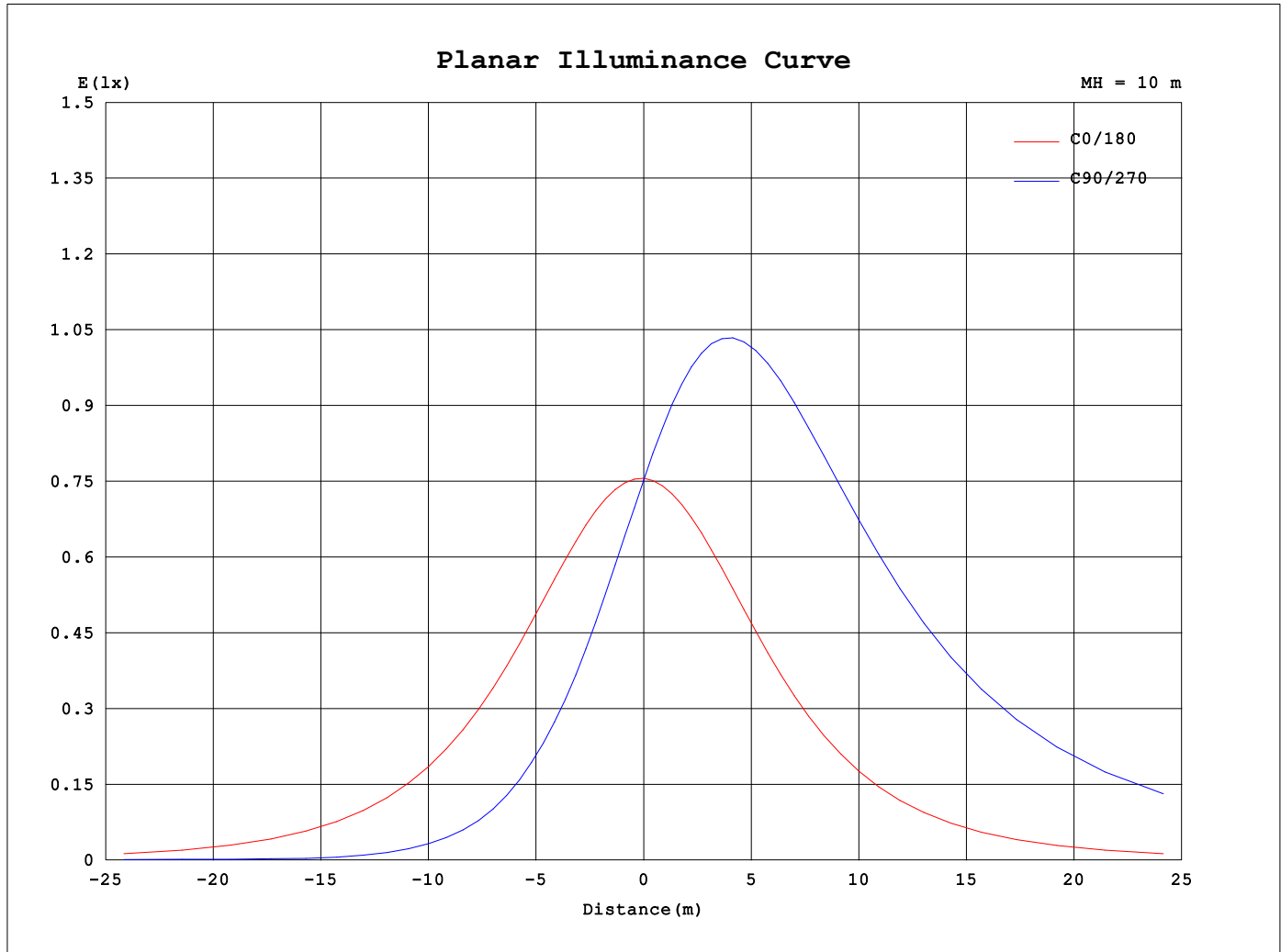
AvgL	cd/m2
L_0~180 (65) av	2393
L_0~180 (75) av	1935
L_0~180 (85) av	1086
L_90~270 (65) av	10538
L_90~270 (75) av	18163
L_90~270 (85) av	55425
L_45 (65) av	6887
L_45 (75) av	11458
L_45 (85) av	34336

Standard: GB/T 29293-2012

C Range: 0 - 360DEG
C Interval: 10.0DEG
Test Speed: HIGH
Temperature:25.3°C
Operators:
Test Date:13 December 2022

γ Range: 0 - 180DEG
γ Interval: 2.5DEG
Test System:EVERFINE GO-2000A_V1 SYSTEM V2.00.456
Humidity:65.0%
Test Distance:6.265m [K=1.0000]
Remarks:

Planar Illuminance Curve



C Range: 0 - 360DEG
C Interval: 10.0DEG
Test Speed: HIGH
Temperature: 25.3°C
Operators:
Test Date: 13 December 2022

γ Range: 0 - 180DEG
 γ Interval: 2.5DEG
Test System: EVERFINE GO-2000A_V1 SYSTEM V2.00.456
Humidity: 65.0%
Test Distance: 6.265m [K=1.0000]
Remarks:

LUMINOUS DISTRIBUTION INTENSITY DATA

NAME: 99WTE12/BL	TYPE:	WEIGHT: 1
SPEC.:	DIM.: 600 x 200 x 25	SERIAL No.: 0
MFR.: Elmark Industries JSC	SUR.: Cilinder	Shielding Angle:

Table--1

UNIT: cd

C (DEG) γ (DEG)	0	10	20	30	40	50	60	70	80	90	100	110	120	130	140	150	160	170	180
0	75.4	75.4	75.4	75.4	75.4	75.4	75.4	75.4	75.4	75.4	75.4	75.4	75.4	75.4	75.4	75.4	75.4	75.4	75.4
5	75.4	73.5	71.7	70.1	68.6	67.3	66.3	65.6	65.1	65.1	65.1	65.5	66.2	67.1	68.3	69.6	71.2	73.0	74.8
10	74.8	71.1	67.6	64.5	61.7	59.5	57.7	56.4	55.6	55.4	55.6	56.3	57.4	59.1	61.2	63.7	66.7	70.0	73.6
15	73.5	68.0	63.0	58.7	54.9	51.9	49.5	47.8	46.8	46.5	46.8	47.7	49.2	51.4	54.3	57.7	61.8	66.5	71.8
20	71.6	64.5	58.1	52.7	48.1	44.5	41.8	39.9	38.8	38.5	38.8	39.8	41.6	44.2	47.5	51.7	56.7	62.6	69.4
25	69.0	60.4	52.8	46.6	41.5	37.6	34.6	32.7	31.5	31.2	31.6	32.7	34.6	37.3	41.0	45.7	51.5	58.4	66.5
30	65.8	55.8	47.3	40.4	35.0	31.0	28.0	26.0	24.9	24.6	25.0	26.2	28.2	31.0	34.7	39.7	46.0	53.7	63.1
35	61.9	50.7	41.5	34.3	28.8	24.8	21.8	19.8	18.7	18.5	18.9	20.1	22.1	25.0	28.8	33.9	40.5	48.8	59.1
40	57.4	45.3	35.6	28.3	22.9	18.9	16.1	14.5	13.6	13.4	13.8	14.8	16.6	19.4	23.2	28.2	34.8	43.5	54.7
45	52.3	39.4	29.5	22.5	17.2	13.7	11.4	10.1	9.35	9.24	9.56	10.5	12.0	14.3	17.8	22.8	29.2	38.0	49.8
50	46.7	33.3	23.6	16.8	12.1	9.28	7.47	6.44	5.92	5.85	6.16	6.91	8.12	10.1	12.9	17.5	23.6	32.4	44.5
55	40.4	26.9	17.8	11.6	7.89	5.69	4.38	3.67	3.31	3.34	3.56	4.16	5.08	6.57	8.84	12.5	18.3	26.6	38.8
60	33.8	20.6	12.2	7.24	4.49	3.00	2.28	2.16	2.28	2.35	2.40	2.45	2.87	3.88	5.53	8.31	13.2	20.8	32.8
65	26.7	14.4	7.29	3.83	2.09	1.76	1.99	2.14	2.28	2.37	2.39	2.37	2.27	2.21	3.04	4.94	8.48	15.2	26.5
70	19.6	8.76	3.58	1.60	1.52	1.73	1.98	2.14	2.28	2.37	2.41	2.37	2.27	2.06	1.85	2.54	4.78	9.98	20.1
75	12.6	4.03	1.31	1.22	1.49	1.71	1.97	2.13	2.28	2.37	2.41	2.37	2.27	2.06	1.82	1.50	2.21	5.43	13.8
80	6.33	1.24	0.98	1.18	1.46	1.69	1.95	2.11	2.28	2.36	2.41	2.37	2.27	2.04	1.80	1.47	1.20	2.18	7.94
85	1.81	0.74	0.95	1.16	1.44	1.66	1.92	2.09	2.28	2.34	2.41	2.35	2.26	2.03	1.78	1.44	1.16	0.87	3.17
90	0.72	0.74	0.94	1.16	1.41	1.63	1.89	2.06	2.25	2.31	2.39	2.32	2.23	1.99	1.75	1.42	1.13	0.85	0.66
95	4.31	1.09	0.93	1.16	1.40	1.63	1.86	2.03	2.21	2.27	2.35	2.29	2.20	1.97	1.73	1.42	1.13	0.87	1.84
100	10.9	3.58	1.75	1.21	1.40	1.63	1.85	2.00	2.17	2.23	2.31	2.25	2.17	1.94	1.71	1.43	1.22	1.41	6.46
105	18.9	7.88	4.23	2.57	1.73	1.65	1.83	1.97	2.12	2.18	2.26	2.21	2.13	1.94	1.71	1.87	2.53	2.82	12.7
110	27.3	13.4	7.88	5.22	3.76	2.70	2.13	2.03	2.09	2.17	2.22	2.21	2.14	2.32	2.88	3.66	4.80	4.10	16.9
115	35.8	19.6	12.4	8.70	6.64	5.15	4.17	3.46	3.14	2.96	3.05	3.22	3.64	4.19	5.12	6.30	7.83	6.12	20.3
120	44.0	26.1	17.6	12.9	10.3	8.29	6.95	6.00	5.48	5.20	5.27	5.50	6.07	6.83	8.02	9.61	9.90	8.33	22.6
125	51.0	32.7	23.0	17.5	14.5	12.1	10.4	9.13	8.44	8.08	8.11	8.40	9.07	10.1	11.6	13.3	11.8	10.6	24.9
130	57.0	39.2	28.7	22.2	19.2	16.4	14.4	12.8	12.0	11.5	11.5	11.9	12.7	13.9	15.7	16.1	16.6	12.9	25.8
135	61.8	45.3	34.5	27.5	23.0	21.3	19.0	17.1	16.1	15.5	15.6	15.9	16.9	17.9	18.2	16.3	16.5	15.1	26.2
140	65.6	50.8	40.3	33.0	28.0	25.6	23.8	22.0	20.8	20.2	20.2	20.6	21.3	19.7	17.1	16.7	14.4	17.0	26.4
145	68.4	55.3	46.1	38.6	33.6	30.4	28.3	27.0	26.1	25.3	24.8	25.0	21.6	18.5	16.7	15.8	14.4	18.2	26.2
150	70.3	58.9	51.2	44.3	39.5	36.4	33.9	31.5	30.2	29.5	29.2	27.1	20.3	17.1	15.7	13.7	16.0	18.8	25.8
155	71.1	61.7	55.3	49.4	45.3	42.4	39.9	37.3	35.7	34.8	34.7	22.4	17.1	14.8	13.2	14.8	16.7	18.9	24.9
160	71.0	63.8	58.6	53.7	49.7	48.2	45.9	43.4	41.9	41.1	26.5	15.9	12.3	12.6	13.9	15.4	19.6	22.9	28.6
165	70.1	65.1	61.3	57.4	54.1	53.3	52.5	49.6	48.2	47.1	10.8	11.7	12.6	13.6	21.2	26.9	31.4	34.5	39.9
170	67.9	65.2	62.6	59.9	57.4	57.4	55.6	51.3	41.0	11.1	12.1	12.7	18.6	29.3	36.1	40.5	44.1	46.6	51.2
175	64.1	62.9	61.6	60.0	58.0	55.5	51.8	43.7	18.4	11.4	12.6	27.1	41.8	48.6	53.1	55.8	58.0	59.6	62.2
180	69.3	69.2	68.0	66.0	62.9	58.2	50.6	34.9	14.2	14.3	52.1	65.5	69.6	71.1	71.6	71.6	71.6	71.6	69.4

C Range: 0 - 360DEG

C Interval: 10.0DEG

Test Speed: HIGH

Temperature:25.3°C

Operators:

Test Date:13 December 2022

γ Range: 0 - 180DEG

γ Interval: 2.5DEG

Test System:EVERFINE GO-2000A_V1 SYSTEM V2.00.456

Humidity:65.0%

Test Distance:6.265m [K=1.0000]

Remarks:

LUMINOUS DISTRIBUTION INTENSITY DATA

NAME: 99WTE12/BL	TYPE:	WEIGHT: 1
SPEC.:	DIM.: 600 x 200 x 25	SERIAL No.: 0
MFR.: Elmark Industries JSC	SUR.: Cilinder	Shielding Angle:

Table--2

UNIT: cd

C (DEG) γ (DEG)	190	200	210	220	230	240	250	260	270	280	290	300	310	320	330	340	350		
0	75.4	75.4	75.4	75.4	75.4	75.4	75.4	75.4	75.4	75.4	75.4	75.4	75.4	75.4	75.4	75.4	75.4		
5	76.7	78.7	80.5	82.2	83.7	85.0	85.9	86.5	86.8	86.6	86.1	85.3	84.1	82.7	81.0	79.2	77.4		
10	77.4	81.3	85.1	88.8	92.1	94.5	97.0	98.0	98.9	98.2	97.5	95.3	93.1	90.0	86.4	82.6	78.7		
15	77.5	83.5	89.4	95.2	100	105	108	110	112	111	109	106	102	97.2	91.5	85.5	79.5		
20	76.9	85.0	93.2	101	109	115	120	123	125	124	122	117	111	104	96.1	87.8	79.5		
25	75.7	85.9	96.3	107	116	125	132	136	138	137	134	128	120	111	100	89.5	78.9		
30	73.9	86.1	98.8	112	124	134	143	149	152	151	146	138	129	117	104	90.4	77.6		
35	71.5	85.6	101	116	131	144	155	162	165	164	159	149	137	122	106	90.5	75.5		
40	68.4	84.4	102	120	137	153	166	174	178	177	170	159	145	127	108	89.9	72.7		
45	64.7	82.6	102	123	143	161	176	186	191	190	182	169	152	131	110	88.5	69.1		
50	60.5	80.1	102	125	148	169	185	197	203	201	193	178	158	135	110	86.4	64.8		
55	55.7	77.0	101	127	152	175	194	208	214	212	202	186	164	138	110	83.5	59.8		
60	50.4	73.4	100	129	156	181	202	217	224	222	211	193	168	140	110	80.2	54.2		
65	44.7	69.6	98.5	129	159	186	209	225	232	230	219	199	173	142	109	76.3	47.9		
70	38.6	65.4	96.7	130	162	191	214	232	239	238	225	204	176	143	107	72.2	41.3		
75	32.4	61.3	94.9	130	163	194	219	237	245	243	230	208	179	144	106	68.1	34.5		
80	26.4	57.5	93.1	130	164	196	222	241	249	248	234	212	181	145	105	64.5	28.1		
85	21.2	54.4	91.7	130	165	198	224	243	252	250	237	214	182	145	104	62.1	23.2		
90	18.4	52.9	90.9	129	165	198	224	244	253	251	237	214	182	145	104	61.5	22.0		
95	19.6	53.3	91.0	129	164	197	224	243	252	251	237	214	182	146	105	63.5	25.8		
100	24.6	56.2	92.4	129	164	196	222	242	250	249	235	213	182	147	107	67.7	32.6		
105	31.2	60.5	94.7	130	164	195	220	239	247	246	233	212	182	148	110	72.9	40.5		
110	38.4	65.5	97.4	131	163	193	217	235	243	242	230	209	181	148	113	78.4	48.4		
115	45.5	70.7	100	132	162	190	213	230	237	236	225	205	179	149	116	83.9	56.1		
120	52.5	75.8	103	132	160	186	207	223	230	229	218	201	176	148	118	89.0	63.4		
125	59.1	80.6	105	132	157	181	201	215	221	221	211	195	173	148	120	93.6	70.0		
130	64.4	84.6	107	131	154	176	193	206	212	211	203	188	168	146	121	97.6	75.9		
135	62.1	80.1	104	130	150	170	185	196	201	201	193	181	163	144	122	101	81.2		
140	57.7	73.5	93.7	119	144	163	176	186	190	190	183	173	157	141	122	103	85.6		
145	53.0	65.6	81.3	102	129	155	166	174	178	178	172	164	151	137	121	105	89.2		
150	47.8	57.7	69.7	85.8	107	139	156	163	165	166	161	155	144	132	119	105	91.9		
155	41.9	49.9	58.8	70.7	86.2	110	145	151	152	153	150	145	136	127	116	105	92.6		
160	39.4	42.6	48.6	56.9	67.4	84.1	113	139	140	141	138	135	128	121	112	104	88.7		
165	46.8	49.7	48.7	44.9	51.1	61.4	79.4	126	127	128	126	124	119	114	108	101	79.7		
170	54.4	56.7	55.9	52.2	43.6	42.1	50.7	76.7	114	115	114	113	109	107	102	90.5	71.4		
175	62.8	62.7	61.4	58.4	52.1	39.3	27.7	32.1	97.6	101	100	98.8	94.3	89.7	82.9	75.6	68.7		
180	69.0	68.1	66.0	63.0	58.2	50.6	34.9	14.2	14.3	52.2	65.4	69.6	71.0	71.6	71.6	71.6	71.6		

C Range: 0 - 360DEG

C Interval: 10.0DEG

Test Speed: HIGH

Temperature:25.3°C

Operators:

Test Date:13 December 2022

γ Range: 0 - 180DEG

γ Interval: 2.5DEG

Test System:EVERFINE GO-2000A_V1 SYSTEM V2.00.456

Humidity:65.0%

Test Distance:6.265m [K=1.0000]

Remarks: